

All your needs in one

Universal Stain and Overglaze



Body Stain		
DS Universal Body Stain - S0	5g	605520
DS Universal Body Stain - S1	5g	605521
DS Universal Body Stain - S2	5g	605522
DS Universal Body Stain - S3	5g	605523
DS Universal Body Stain - S4	5g	605524
Incisal Stain		
DS Universal Incisal Stain - i1	5g	605531
DS Universal Incisal Stain - i2	5g	605532
Color Stain		
DS Universal Stain - White	5g	605500
DS Universal Stain - Crème	5g	605501
DS Universal Stain - Sunset	5g	605502
DS Universal Stain - Copper	5g	605503
DS Universal Stain - Khaki	5g	605504
DS Universal Stain - Olive	5g	605505
DS Universal Stain - Mahogany	5g	605506
DS Universal Stain - Violet	5g	605507
DS Universal Stain - Raspberry	5g	605508
DS Universal Stain - Purple	5g	605509
DS Universal Stain - Grey	5g	605510
DS Universal Stain - Chestnut	5g	605511
DS Universal Stain - Blue	5g	605512
DS Universal Stain - Pink	5g	605513
Overglaze		
DS Universal Overglaze	5g	605540
DS Universal Overglaze - High Flu	5g	605542
Kit Configuration		
DS Universal Stain Kit (all items above)	EA	600700



Dentsply Sirona Universal Stain and Overglaze system

The Universal Stain and Overglaze is specially formulated with maximum compatibility to satisfy all of your needs in a single finishing system.



Dentsply Sirona Prosthetics
570 West College Avenue
York, PA 17401
800-243-1942
dentsplysirona.com/ceramics

DeguDent GmbH
Rodenbacher Chaussee 4
63457 Hanau-Wolfgang
Germany
+49 6181 59-50

© 2018 Dentsply Sirona Inc. All rights reserved. Form No. DP-0000287 Rev. 0 (03/2018)

Universal Stain and Overglaze

All your needs in one

Universal Stain and Overglaze

All your needs in one

The Universal Stain and Overglaze is specially formulated with maximum compatibility to satisfy all of your needs in a single finishing system.

- + Ultimate efficiency
- + Easy to use
- + Versatile performance

Coefficient of Thermal Expansion (CTE):
 $8.0 \pm 0.5 \times 10^{-6} \text{ K}^{-1} (25-400^\circ\text{C})$

Dentsply Sirona Universal Stain and Overglaze are indicated for staining and glazing the following restorations:

- + Celtra® Press zirconia-reinforced lithium silicate (ZLS)
- + Celtra® Duo zirconia-reinforced lithium silicate (ZLS)
- + Cercon® ht zirconia
- + Cercon® xt zirconia
- + Kiss porcelain (except Duceragold®)
- + Ceramco® porcelain
- + Several other framework and/or veneering porcelain systems (confirm CTE)

Universal Stains

Universal Stains introduce a full-spectrum color range along with standard and high-fluorescence Overglaze ensuring one system can do it all:

- + 5 body stains
- + 2 incisal stains
- + 14 color stains
- + 2 overglazes
- + Standard Overglaze, for use with veneering systems and substructures with natural fluorescence
- + High-Flu Overglaze, for use with substructures lacking sufficient natural fluorescence

Body Stains



Incisal Stains



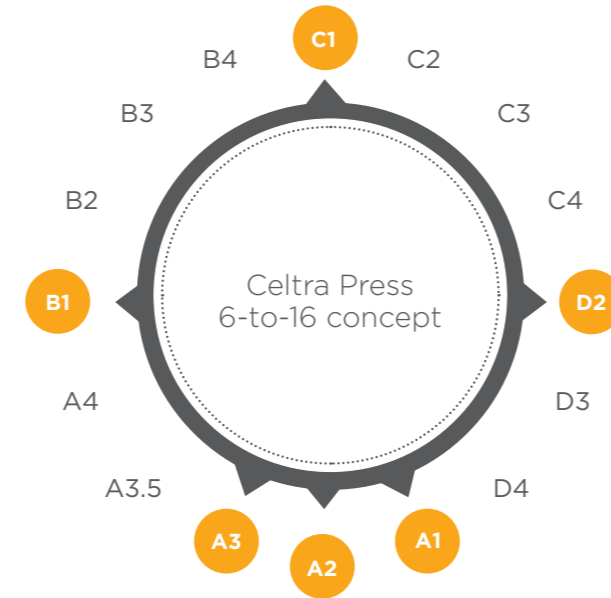
Color Stains



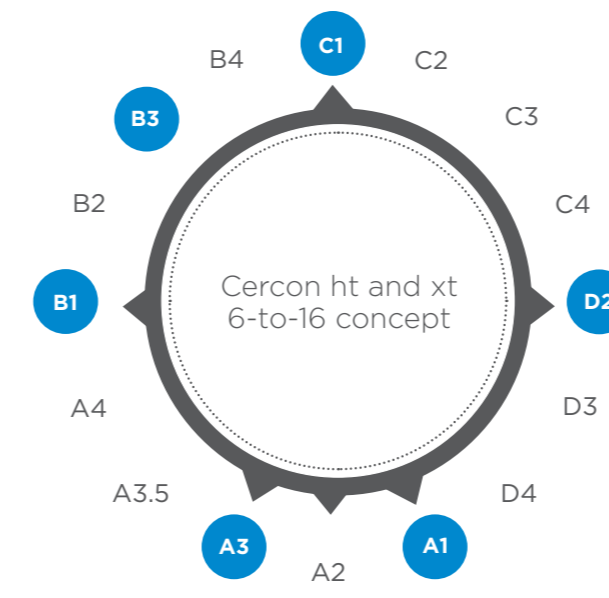
All-ceramic 6-to-16 shade concept

Universal Stains introduce the option for 100% shade coverage using a simple staining recipe to help streamline laboratory workflows to improve efficiency and save inventory costs. Achieve all 16 VITA classical A1-D4¹ shades using only 6 base shades in Celtra® and Cercon® frameworks.

Celtra



Cercon



Crème Universal Stain enhances the incisal aspect in this Celtra Press 3-unit anterior bridge.



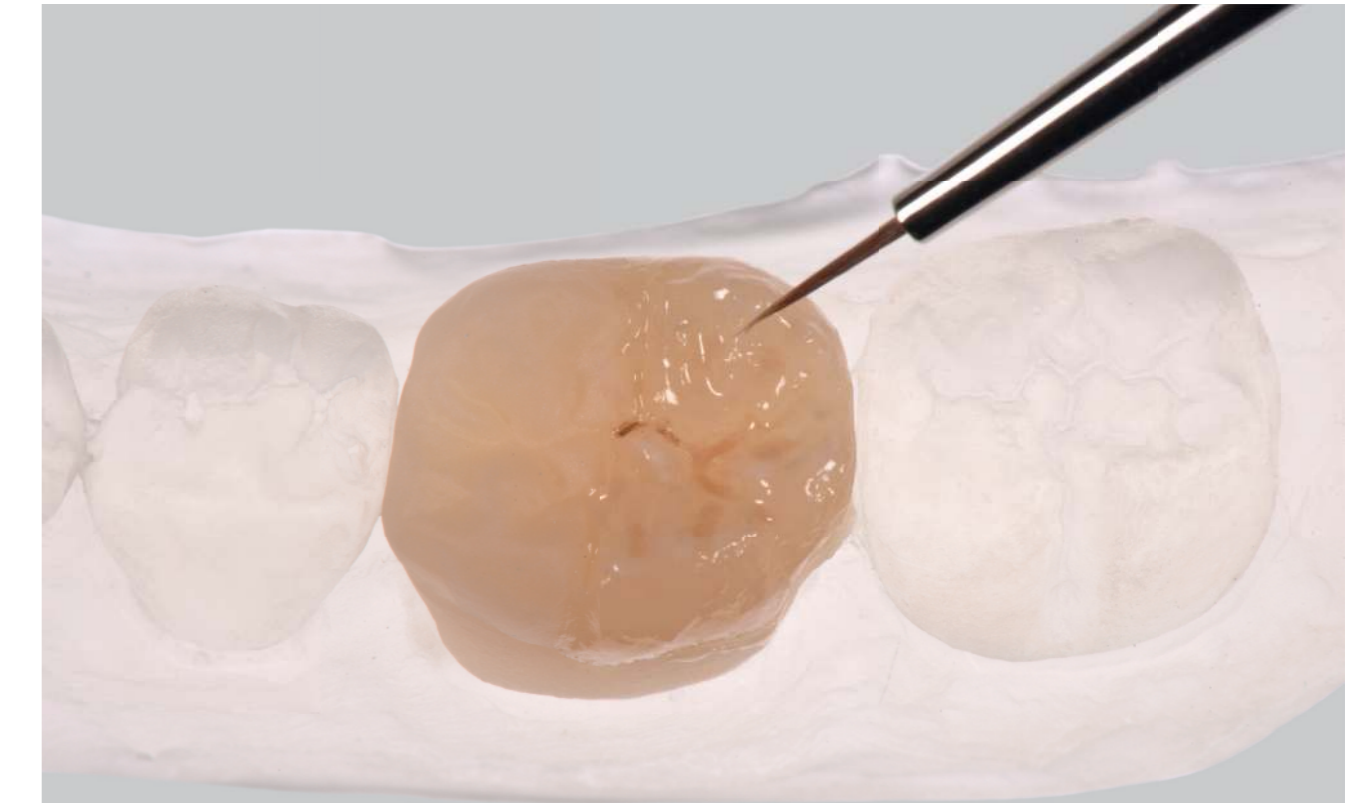
High Flu Universal Overglaze enhances a quick and easy shade reproduction in a monolithic Cercon xt crown.

Easy-to-follow staining recipe guides for Celtra Duo, Celtra Press, Cercon ht, and Cercon xt are available at dentsplysirona.com/ceramics.

¹VITA, VITA classical A1-D4, and 3D-MASTER are registered trademarks of VITA Zahnfabrik H. Rauter GmbH & Co. KG.

Universal Stain and Overglaze

The Universal Stain and Overglaze is a highly versatile, comprehensive stain system designed with a full spectrum of color options to meet every need. Broad compatibility makes having a single finishing system a true possibility in your dental laboratory.



Ultimate efficiency

- + Universal material compatibility eliminates multiple finishing systems in your lab

Easy to use

- + Preferred gel format simplifies training and makes it easier to achieve a consistent outcome

Versatile performance

- + Able to be used internally and externally to achieve highly individualized effects